

HINDUSTAN ELECTRONICS ACADEMY (CODE 408) , MARATHAHALLI, BANGALORE-37

1. Name of the Institution

HINDUSTAN ELECTRONICS ACADEMY
P.B. No. 3776, Aswathnagar,
Marathahalli Post
Bengaluru -560037
Contact No.: 08025238650
Email: hea@hindustanacademy.edu.in

2. Name and address of the Trust/ Society/ Company and the Trustees

EVEHANS ACADEMY
P.B. No. 3776, Aswathnagar,
Marathahalli Post,
Bengaluru -560037
Contact No.: 08025232217
Email: contactus@evchans.com

3. Name and Address of the Principal

Dr. Nandeesh Mathad
Principal
Hindustan Electronics Academy,
Marathahalli Post,
Bengaluru-560037
Contact No.: 9845133941
Email: principal.hea@hindustanacademy.edu.in

4. Name of the affiliating Board :DTE Board, Karnataka

5. Governance

Members of the Board

Sl.No	Name	Designation
1.	K .C. Samuel	Chairman
2.	Annie Samuel	Vice Chairman
3.	Benil Benjamin George	Secretary
4.	Babu Varghese	Member
5.	Mani Paul	Member
6.	Eva Samuel	Member
7.	Hanna Samuel	Member

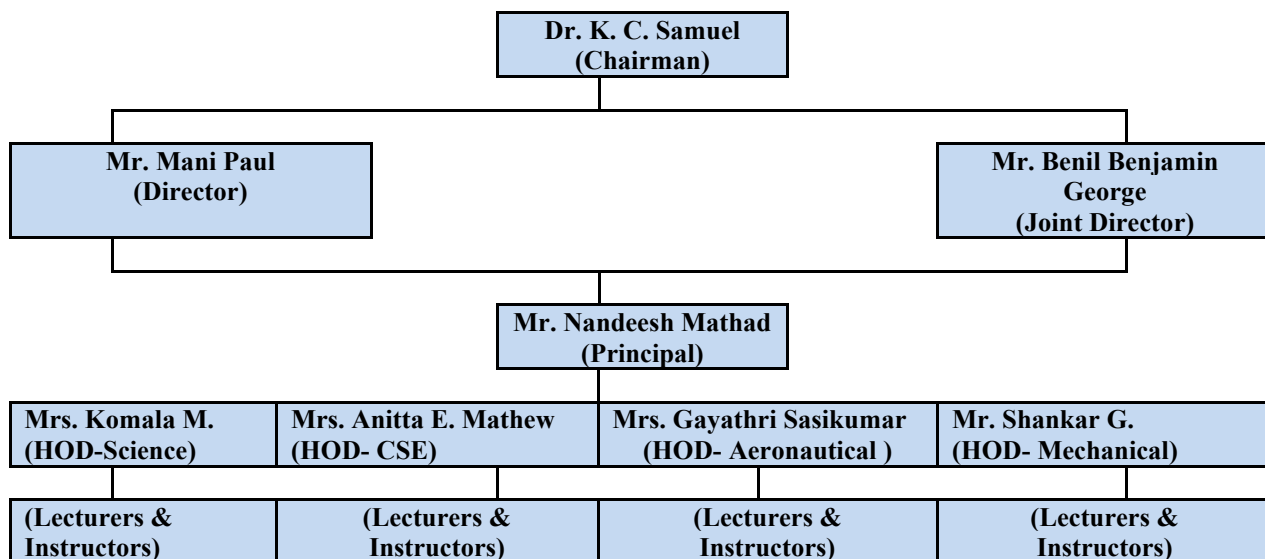
Members of Academic Advisory Body

Sl.No.	Name	Designation
1.	K .C. Samuel	Chairman
2.	Mr. Mani Paul	Director
3.	Dr. Nandeesh Mathad	Principal
4.	D. Pranesh Rao	Assistant Director

• Frequency of the Board Meeting and Academic Advisory Body

Board Meetings : Twice in a year
Academic Advisory Body Meeting: : Twice in a year

Organizational chart and processes



- **Nature and Extent of involvement of Faculty and students in academic affairs/improvements**
We conduct constant interactions among the faculties & students
- **Mechanism/ Norms and Procedure for democratic/ good Governance**
Staff biometric system for punctuality
Internal Quality Assurance cell
Intra communication software for interacting with parents, students & faculty
- **Student Feedback on Institutional Governance/ Faculty performance**
We conduct survey for feedback from students twice in a year
- Grievance Redressal mechanism for Faculty, staff and students : Available
- Establishment of Anti Ragging Committee : Yes
- Establishment of Online Grievance Redressal Mechanism : Yes
- Establishment of Grievance Redressal Committee in the Institution and Appointment of OMBUDSMAN : Yes
- Establishment of Internal Complaint Committee (ICC) : Yes
- Establishment of Committee for SC/ST : Yes
- Internal Quality Assurance Cell : Yes

6. Programmes

Name of Programmes approved by AICT (Level-Diploma)	: Engineering and Technology
Total number of Courses:	: 03
Status of NBA Accreditation:	: No

Name of the Course	Number of seats	Duration	Cut off marks/rank of admission during the last three years	Fee Rs
Aeronautical Engg.	60	3 yrs	Pass Percentage	22,500
Mechanical Engg	30	3 yrs	Pass Percentage	22,500
Computer science & Engg	60	3 yrs	Pass Percentage	22,500

Placement details

Academic Year	Name of the Course	Placement Facilities	Total Students Placed	Lowest Package (In Lakhs)	Highest Package (In Lakhs)
2022-23	Aeronautical Engg.	Available	Nil	1.5	2.5
	Mechanical Engg.	Available	01	1.5	1.5
	Automobile Engg.	Available	06	1.5	2.5
	Computer Sc. & Engg.	Available	01	1.5	1.5
2023-24	Aeronautical Engg	Available	4	2	2.5
	Mechanical Engg.	Available	2	1.5	1.5
	Automobile Engg.	Available	2	1.5	1.5
	Computer Sc. & Engg.	Available	5	3	4
2024 - 25	Aeronautical Engg.	Available	0	0	0
	Mechanical Engg.	Available	2	1	1.5
	Automobile Engg.	Available	3	1	1.5
	Computer Sc. & Engg	Available	4	3	4

Faculty

Permanent Faculty	: 26
Adjunct faculty	: Nil
Faculty student ratio	: 10
Number of faculty employed and left in last three years	: 15

7. Principal profile

Name	: Dr. Nandeesh Mathad
DOB	: 22-07-1967
Educational Qualification	: M.Tech., Ph.D
Unique ID	: 1-93150 87092
Teaching Experience	: 29 yrs
Industry Exp	: 1 Yr
Area of specialization	: Energy Systems Engineering
No. of papers published in Int. Journals	: 05

8. Fee details:

- **Details of Fee, as approved by State Fee Committee, for the Institution**

Registration Fees	: Rs.2000
Tuition Fees	: Rs.22500
Practical Fees	: Rs. 1500

- **Time schedule for payment of Fee for the entire Programme**
Fees should be paid on or before starting of every academic session
- **No. of Fee waivers granted with amount and name of students** : Nil

- Number of scholarships offered by the Institution, duration and amount : Nil

- Criteria for Fee waivers/scholarship Economically weaker
Section Employee of the organization : NIL
- Estimated cost of Boarding and Lodging in Hostels
Per month : Rs.8000
- Any other fee please specify
Uniform : Rs. 7000
DTE Eligibility fees for non-Karnataka students : Rs. 1500
DTE Board E-governance & development fees : Rs. 650

9. Admission

Number of seats sanctioned with the year of approval

Sl. No.	Name of the course	Academic year	Approved Intake
1	Aeronautical Engineering	2024-25	60
2	Computer science & Engineering	2024-25	60
3	Mechanical Engineering	2024-25	30

10. Number of Students admitted under various categories each year in the last three years

Aca. Year	ManagementQuota	EWS	SNQ
2023-24	122	0	3
2024-25	103	0	5
2025-26	91	0	4

11. Admission procedure:

- Mention the admission test being followed, Name and Address of the Test Agency/State Admission Authorities and its URL (website) : NA
- Number of seat allotted to different Test Qualified Candidate separately AIEEE/CET (State conducted test/ Universitytests/ CMAT/ GPAT)/Association conducted testetc.) : NA
- Calendar for admission against Management/vacant seats: : Strictly as per DTE Board
- Calendar
- Last date of request for applications : Strictly as per DTE Board
- Calendar
- Last date for submission of applications : Strictly as per DTE Board
- Calendar
- Dates for announcing final results : Strictly as per DTE Board
- Calendar
- Release ofadmissionlist (mainlistandwaitinglist Shall be announced on the same day) : NA
- Date for acceptance by the candidate (time given Shall in no case be less than 15days) : NA
- Last date for closing the applications : Strictly as per DTE Board
- Calendar
- Stating of academic session (Semester) : Strictly as per DTE Board
- Calendar
- The waiting list shall be activated only on the Expiry of date of main list : Strictly as per DTE board

- The policy of refund of the Fee, in case of withdrawal, Shall be clearly notified : Strictly as per DTE board

12. Criteria and weightage for Admission

- Describe each criterion with its respective weight ages i.e. Admission Test, marks in qualifying examination etc. : NA
- Mention the minimum Level of acceptance, if any : Pass percentage in 10th standard
- Mention the cut-off Levels of percentage and percentile Score of the candidates in the admission test for the last Three years : Pass percentage in 10th
- Display marks scored in test etc. and in aggregate for all Candidates who were admitted : NA

13. List of Applicants

- List of candidates whose applications have been received Along with percentile/percentages score in separate Categories for open seats. : NA
- List of candidates who have applied along with percentage /and percentile score for Management quota seats (merit wise) : NA

14. Results of Admission Under Management seats/Vacant seats

- Composition of selection team for admission under Management Quota with the brief profile of members (This information be made available in the public domain After the admission process is over): : Na
- Score of the individual candidate admitted and arranged In order of merit : NA
- Waiting list of the candidate in order of merit to be operative from the last date of joining of the first list candidate : NA
- List of the candidate who joined within the date, Vacancy position in each category before operation of Waiting list : NA

15. Information of Infrastructure and Other Resources Available Administrative area

AMENITIES AREA

Room No.	Room type (mention Class Room/Laboratory/Toilet, etc.)	Carpet area (in m ²)	Completion of Flooring	Completion of Walls and painting	Completion of Electrification and lighting
Br1(F)	Board Room	51.15	Ready	Ready	Ready
Do1(G)	Department Office	53.02	Ready	Ready	Ready
Eco1(S17)	Exam Control Office	70.73	Ready	Ready	Ready
Fr1(F14)	Faculty Room	67.39	Ready	Ready	Ready
Fr2(F15)	Faculty Room	31.45	Ready	Ready	Ready

Fr3(S19)	Faculty Room	21.34	Ready	Ready	Ready
Hk1(G)	Housekeeping	13.5	Ready	Ready	Ready
Hod1(F)	Cabin for Head of Dept	10.59	Ready	Ready	Ready
Hod2(F)	Cabin for Head of Dept	8.18	Ready	Ready	Ready
Hod3(F)	Cabin for Head of Dept	9.26	Ready	Ready	Ready
M1(G6)	Maintenance	24.47	Ready	Ready	Ready
Po1(F)	Placement Office	51.27	Ready	Ready	Ready
Pm1(S)	Principal/ Directors Office	56.51	Ready	Ready	Ready
S10	Office All Inclusive	31.08	Ready	Ready	Ready
S11	Office All Inclusive	32.49	Ready	Ready	Ready
S13	Office All Inclusive	30.69	Ready	Ready	Ready
S14	Office All Inclusive	32.24	Ready	Ready	Ready
S15	Office All Inclusive	31.44	Ready	Ready	Ready
Sr1	Security	14.7	Ready	Ready	Ready
Str1(G7)	Central Store	28.31	Ready	Ready	Ready
Str2(T5)	Central Store	6.12	Ready	Ready	Ready

AMENITIES AREA

Room No.	Room type (mention Class Room/Laboratory/Toilet, etc.)	Carpet area (in m ²)	Completion of Flooring	Completion of Walls and painting	Completion of Electrification and lighting
Bcr1(F1)	Boys Common Room	75.01	Ready	Ready	Ready
Cf1	Cafeteria	69.22	Ready	Ready	Ready
Cf2	Cafeteria	83.6	Ready	Ready	Ready
Gcr (S9)	Girls Common Room	82.83	Ready	Ready	Ready
Sr1(T4)	First aid cum Sick Room	22.22	Ready	Ready	Ready
Ss1	Stationery Store	21.82	Ready	Ready	Ready
Tl1(G)	Toilet	20.4	Ready	Ready	Ready
Tl2(T)	Toilet	10	Ready	Ready	Ready
Tl3(T)	Toilet	10.48	Ready	Ready	Ready
Tl4(T)	Toilet	7	Ready	Ready	Ready
Tl5(T)	Toilet	8.92	Ready	Ready	Ready
Tl6(F)	Toilet	6.12	Ready	Ready	Ready
Tl7(G)	Toilet	6.12	Ready	Ready	Ready
Tl8(G)	Toilet	6.67	Ready	Ready	Ready
Tl9(G)	Toilet	8.84	Ready	Ready	Ready
Wmr (F)	Others	6	Ready	Ready	Ready

INSTRUCTIONAL AREA

Room No.	Room type (mention Class Room/Laboratory/Toilet, etc.)	Carpet area (in m ²)	Completion of Flooring	Completion of Walls and painting	Completion of Electrification and lighting
F16	Laboratory	31.72	Ready	Ready	Ready
F17	Laboratory	31.11	Ready	Ready	Ready
F18	Laboratory	30.55	Ready	Ready	Ready
F19	Laboratory	32.3	Ready	Ready	Ready
F2	Classroom	83.3	Ready	Ready	Ready
F20	Laboratory	30.94	Ready	Ready	Ready
F3	Tutorial Room	15.54	Ready	Ready	Ready
F4	Tutorial Room	16.38	Ready	Ready	Ready
F5	Tutorial Room	16.46	Ready	Ready	Ready
F6	Tutorial Room	18.82	Ready	Ready	Ready
F8	Laboratory	51.53	Ready	Ready	Ready
F9	Laboratory	21.04	Ready	Ready	Ready
G1	Seminar Hall	51.83	Ready	Ready	Ready
G10	Laboratory	46.75	Ready	Ready	Ready
G11	Laboratory	86.55	Ready	Ready	Ready
G12	Workshop	75.84	Ready	Ready	Ready
G13	Workshop	76.32	Ready	Ready	Ready
G14	Additional Workshop	35.04	Ready	Ready	Ready
G15	Laboratory	50.11	Ready	Ready	Ready
G16	Laboratory	50.09	Ready	Ready	Ready
G17	Laboratory	26.48	Ready	Ready	Ready
G18	Laboratory	37.92	Ready	Ready	Ready
G2	Seminar Hall	51.59	Ready	Ready	Ready
G3	Seminar Hall	52.15	Ready	Ready	Ready
G4	Laboratory	23.12	Ready	Ready	Ready
G5	Laboratory	23.5	Ready	Ready	Ready
G8	Workshop	95.59	Ready	Ready	Ready
G9	Additional Workshop	120.1	Ready	Ready	Ready
Hangar	Laboratory	332.11	Ready	Ready	Ready
Ng2	Laboratory	102.2	Ready	Ready	Ready
S1	Classroom	52.29	Ready	Ready	Ready
S16	CAD Center	102.6	Ready	Ready	Ready
S2	Classroom	51.02	Ready	Ready	Ready
S3	CAD Center	47.26	Ready	Ready	Ready
S5	Classroom	48.86	Ready	Ready	Ready
S6	Classroom	48.68	Ready	Ready	Ready

S8	Classroom	48.67	Ready	Ready	Ready
T3	Language Laboratory	54.83	Ready	Ready	Ready
T5	Laboratory	56.51	Ready	Ready	Ready

INSTRUCTIONAL AREA- COMMON FACILITIES

Room No.	Room type (mention Class Room/Laboratory/Toilet, etc.)	Carpet area (in m ²)	Completion of Flooring	Completion of Walls and painting	Completion of Electrification and lighting
F8	Computer Center	51.53	Ready	Ready	Ready
F9	Computer Center	21.04	Ready	Ready	Ready
Lib1	Library & Reading Room	144.7	Ready	Ready	Ready
Lib2	Library & Reading Room	31.95	Ready	Ready	Ready
Lib3	Library & Reading Room	31.19	Ready	Ready	Ready
Lib4	Library & Reading Room	37	Ready	Ready	Ready
S3	Computer Center	47.26	Ready	Ready	Ready
S4	Computer Center	43.14	Ready	Ready	Ready
T1	Library & Reading Room	70.2	Ready	Ready	Ready
T3	Language Laboratory	54.83	Ready	Ready	Ready

- Central Examination Facility : NA
- Number of rooms and capacity of each online examination facility (Number of Nodes, Internet band width, etc.) : NA
- Barrier Free Built Environment for disabled and elderly persons : Yes
- Occupancy Certificate : Yes
- Fire and Safety Certificate : Yes
- Hostel facility : Yes
- **Library Facility:**
 - Number of volumes : 6873
 - Number of Titles : 2794
 - Number of Journals: : 09
 - E-Library : DELNET
 - National Digital Library (NDL) : Available
- **Laboratory and Workshop**
 - List of Major Equipment/Facilities
 - In each Laboratory/Workshop : As per DTE, Karnataka – syllabus
- **Computing Facility**
 - Number of computers available : 102
 - Number of systems connected by LAN : 102
 - Number of systems connected by WAN : 102
 - Major Software available : 20
- Internet bandwidth : Airtel : 100 mbps
: Act Fibre net : 400 mbps
- Power backup : Available 127 kva
- Facility for conduct of online Webinars/Workshops, etc : Available

- Facilities for conduct of classes/courses in online mode : Internet facility is available
(Theory & Practical) in classrooms and labs
- Institution Innovation Cell (IIC) : Available
- Social media cell : NA
- Sports and games facilities : NA
- Extracurricular activities : As per DTE norms
- Soft skill development facilities : As per DTE norms
- Teaching and learning processes : As per DTE norms
- Academic calendar as per DTE (2025-26) : Opening of odd Sem : 30-06-2025
: Closing of odd Sem : 15-11-2025
: Opening of even Sem : 22-12-2025
: Closing of even Sem : 11-04-2026
- Academic Time Table with the name of the
Faculty members handling the Course : Updated in Intra communication
UOLO and Notice board
- Working Hours of the college : 40 Hrs /Week ,
: 8.15a.m. to 4.15 pm (week days)
: 8.15a.m. to 1.15 pm (Saturday)
- Teaching load of the staff : 20-24 Hrs / week
- Internal continuous evaluation system in place : Feed back and survey conducted twice in every
Semester